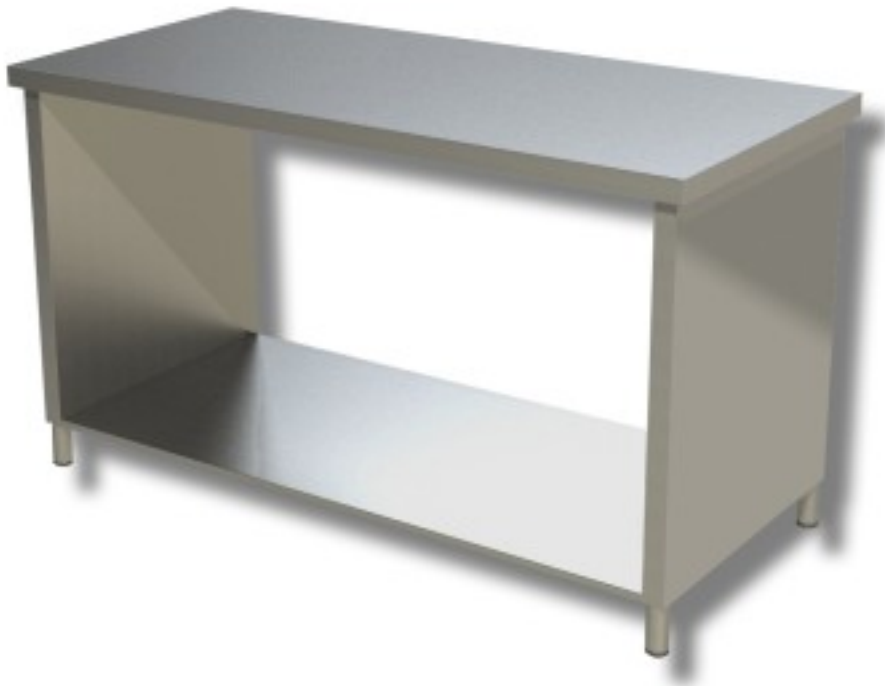


Cod: 38220632

Stainless steel table with sides on shelf depth 600 mm 1800x600 mm



Description

Stainless steel work table with sides on a shelf. Table with a height of 85 cm and a depth of 60 cm and a length of 180 cm.

Dimensions

Dimensioni esterne	1800x600x850 mm
--------------------	-----------------

Technical data

Capacità di carico	48 kg
--------------------	-------

