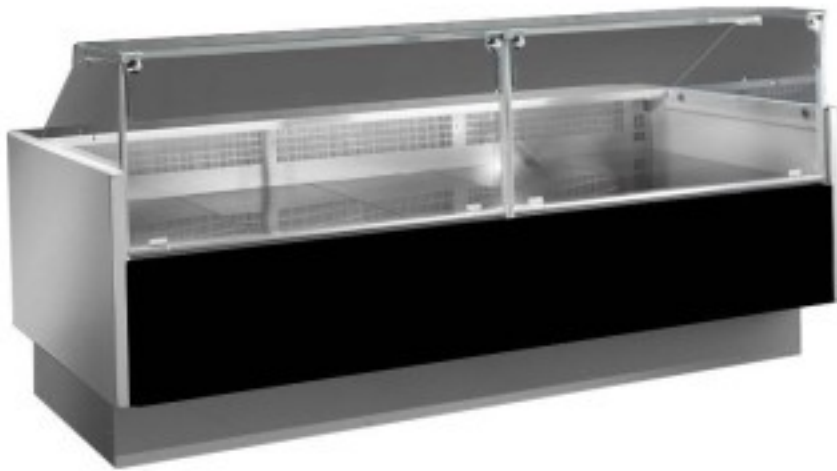


Cod: 115640020023020

**Black ventilated refrigerated counter for butchery and delicatessen +2+5°C with reserve compartment 104x117,5x120h cm straight glass panes**



## Description

Ventilated butcher's and delicatessen counter, simple and modern design, large stainless steel display surface, LED lighting to give maximum prominence to the product on display, simple and intuitive electronic control panel, thermoformed and insulated shoulders (40 mm thick), low energy consumption and low environmental impact, hot air glass anti-fogging system, refrigerated reserve, can be channelled (specify when ordering).

The number of reserve compartment doors varies according to size.

Standard packaging: pallet + nylon,

Packaging with wooden cage available as an option.

## Dimensions

|                    |                   |
|--------------------|-------------------|
| Dimensioni esterne | 1040x1175x1200 mm |
| Piano di lavoro    | 280 mm            |
| Piano espositivo   | 900 mm            |

## Technical data

|   |            |
|---|------------|
| Alimentazione   | Electric   |
| Assorbimento a regime (dotazione standard)                | 0370 kW    |
| Assorbimento all'avviamento (dotazione standard)          | 0.470 kW   |
| Classe climatica  | 3          |
| Gas refrigerante  | R455A      |
| Potenza assorbita dall'illuminazione (dotazione standard) | 0.010 kW   |
| Refrigerazione  | ventilated |
| Riserva   | 50 Lt      |
| Sbrinamento   | a stopover |
| Superficie espositiva                                     | 0.84 Mq    |
| Temperatura d'esercizio                                   | +2 +5 °C   |
| Voltaggio   | 230 V      |