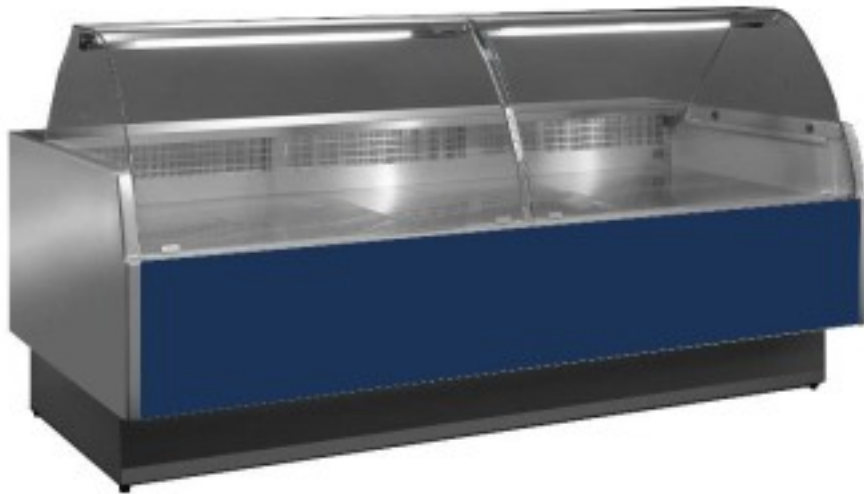


Cod: 115640360012997

**Blue ventilated refrigerated counter for butchery and delicatessen +2+5°C
with reserve compartment 383x117,5x123,5h cm curved glass panes**



Description

Ventilated butcher's and delicatessen counter, simple and modern design, large stainless steel display surface, LED lighting to give maximum prominence to the product on display, simple and intuitive electronic control panel, thermoformed and insulated shoulders (40 mm thick), low energy consumption and low environmental impact, hot air glass anti-fogging system, refrigerated reserve, can be channelled (specify when ordering).

The number of reserve compartment doors varies according to size.
Standard packaging: pallet + nylon,

Packaging with wooden cage available as an option

Dimensions

Dimensioni esterne	3830x1175x1235 mm
Piano di lavoro	280 mm
Piano espositivo	900 mm

Technical data

Alimentazione	Electric
Assorbimento a regime (dotazione standard)	1.200 kW
Assorbimento all'avviamento (dotazione standard)	1.485 kW
Assorbimento elettrico (dotazione standard)	0.176 kW
Classe climatica	3
Gas refrigerante	R455A
Potenza assorbita dall'illuminazione (dotazione standard)	0.032 kW
Refrigerazione	ventilated
Riserva	250 Lt
Sbrinamento	a stopover
Superficie espositiva	3.28 Mq
Temperatura d'esercizio	+2 +5 °C
Voltaggio	230 V