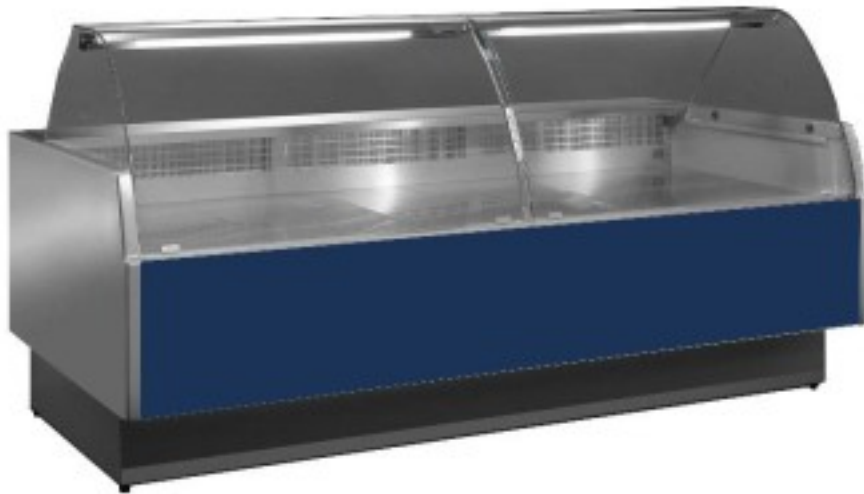


Cod: 115640360012996

Blue ventilated refrigerated counter for butchery and delicatessen +2+5°C with reserve compartment 296x117,5x123,5h cm curved glass panes



Description

Ventilated butcher's and delicatessen counter, simple and modern design, large stainless steel display surface, LED lighting to give maximum prominence to the product on display, simple and intuitive electronic control panel, thermoformed and insulated shoulders (40 mm thick), low energy consumption and low environmental impact, hot air glass anti-fogging system, refrigerated reserve, can be channelled (specify when ordering). The number of reserve compartment doors varies according to size. Standard packaging: pallet + nylon, Packaging with wooden cage available as an option

Dimensions

| | |
|--------------------|-------------------|
| Dimensioni esterne | 2960x1175x1235 mm |
|--------------------|-------------------|

| | |
|------------------|--------|
| Piano di lavoro | 280 mm |
| Piano espositivo | 900 mm |

Technical data

| | |
|---|------------|
| Alimentazione | Electric |
| Assorbimento a regime (dotazione standard) | 1.050 kW |
| Assorbimento all'avviamento (dotazione standard) | 1.180 kW |
| Assorbimento elettrico (dotazione standard) | 0.123 kW |
| Classe climatica | 3 |
| Gas refrigerante | R455A |
| Potenza assorbita dall'illuminazione (dotazione standard) | 0.026 kW |
| Refrigerazione | ventilated |
| Riserva | 200 Lt |
| Sbrinamento | a stopover |
| Superficie espositiva | 2.52 Mq |
| Temperatura d'esercizio | +2 +5 °C |
| Voltaggio | 230 V |