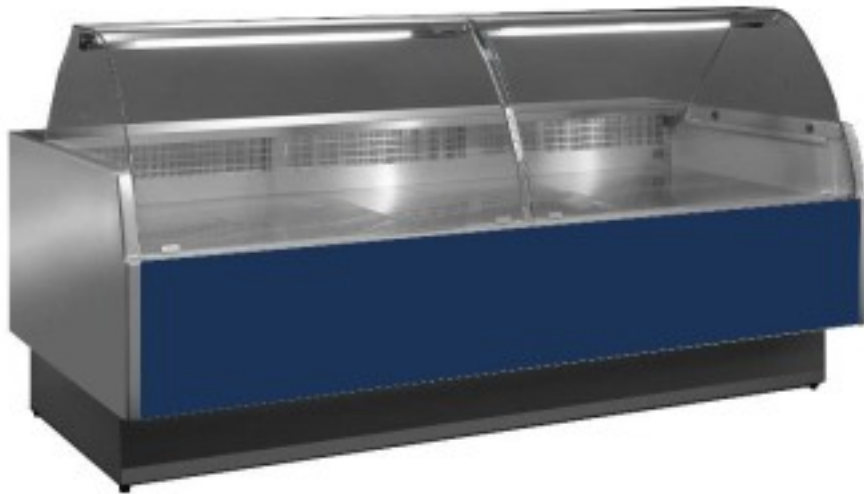


Cod: 115640360012993

**Blue ventilated refrigerated counter for butchery and delicatessen +2+5°C
with reserve compartment 195,5x117,5x123,5h cm curved glasses**



Description

Ventilated butcher's and delicatessen counter, simple and modern design, large display surface in stainless steel, LED lighting to give maximum prominence to the product on display, simple and intuitive electronic control panel, thermoformed and insulated shoulders (40 mm thick), low energy consumption and low environmental impact, hot air glass anti-fogging system, refrigerated reserve, ductable (specify when ordering).

The number of reserve compartment doors varies according to size.
Standard packaging: pallet + nylon,

Packaging with wooden cage available as an option

Dimensions

Dimensioni esterne	1955x1175x1235 mm
Piano di lavoro	280 mm
Piano espositivo	900 mm

Technical data

Alimentazione	Electric
Assorbimento a regime (dotazione standard)	0.600 kW
Assorbimento all'avviamento (dotazione standard)	0.715 kW
Assorbimento elettrico (dotazione standard)	0.088 kW
Classe climatica	3
Gas refrigerante	R455A
Potenza assorbita dall'illuminazione (dotazione standard)	0.016 kW
Refrigerazione	ventilated
Riserva	100 Lt
Sbrinamento	a stopover
Superficie espositiva	1.64 Mq
Temperatura d'esercizio	+2 +5 °C
Voltaggio	230 V