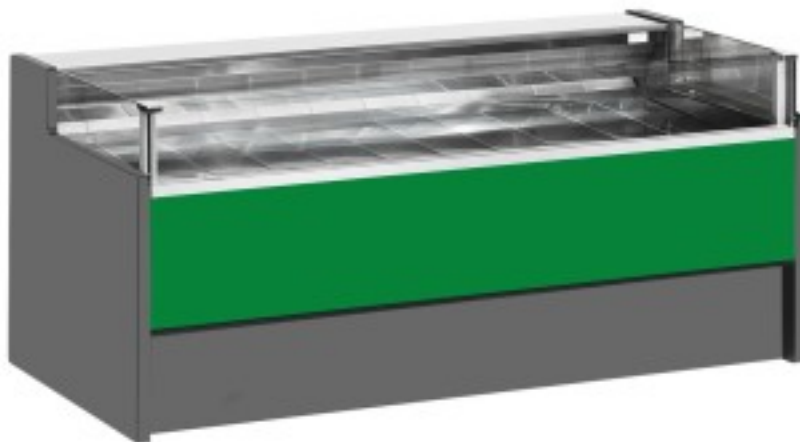


Cod: 11014026942751

Ventilated refrigerated counter with self-service reserve compartment for delicatessen and butcher's shop green 0 +2°C 150x109x92h cm



Description

Ventilated refrigerated self-service counter with modern style and attention to detail to meet every need, sturdy thanks to stainless steel structure, worktop and display area in stainless steel.

Actual dimensions not corresponding to the picture for illustration purposes only.

N.B. The optional frame with wheels can only be selected at the time of purchase.

Dimensions

Dimensioni esterne	1500x1090x920 mm
--------------------	------------------

Dimensioni imballo	1600x1200x1130 mm
--------------------	-------------------

Technical data

Alimentazione	Electric
Gas refrigerante	R290
Refrigerazione	ventilated
Temperatura d'esercizio	0 +2 °C
Voltaggio	230 V