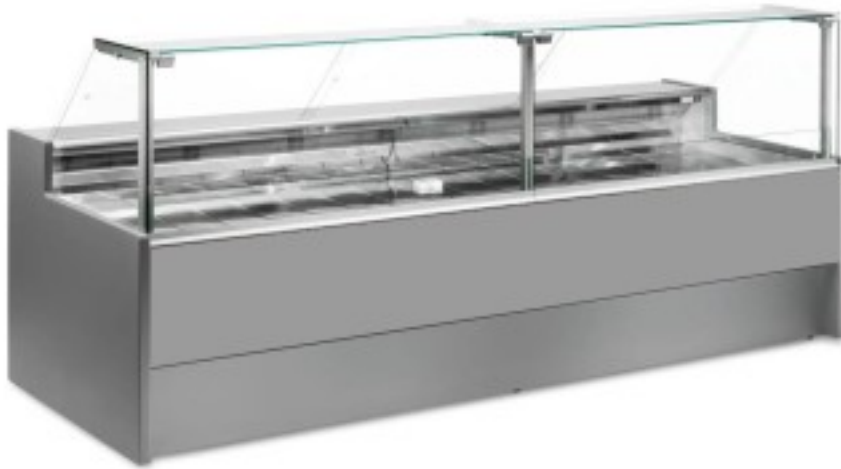


Cod: 10991022942746

Ventilated refrigerated counter with reserve compartment for delicatessen and butcher's shop grey 0 +2°C 150x109x128h cm



Description

Ventilated refrigerated counter with a modern style and attention to detail to meet every need, sturdy thanks to its stainless steel structure, glass panes that open upwards to facilitate the positioning of goods, LED lighting to give maximum emphasis to the product on display, work surface and display area in stainless steel.

Actual dimensions not corresponding to the image for illustration purposes only.

N.B. The optional frame with wheels can only be selected at the time of purchase. Optional polyethylene cutting board and stainless steel scale holder not available with Plexiglas rear closure.

Dimensions

Dimensioni esterne	1500x1090x1280 mm
Dimensioni imballo	1600x1200x1580 mm

Technical data

Alimentazione	Electric
Gas refrigerante	R290
Refrigerazione	ventilated
Temperatura d'esercizio	0 +2 °C
Voltaggio	230 V