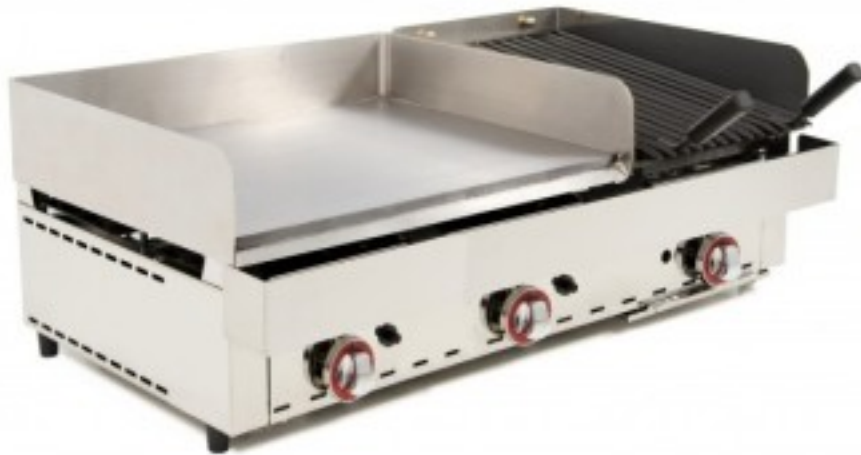


Cod: 10210932197

Fry top gas grill bench top 100,5x59x30,8h cm 12.8 kW smooth plate in thickened steel combined with lava stone 7.2 kW



Description

Fry top gas grill countertop smooth plate in thickened steel combined with lava stone 280x500 mm 7.2 kW

Strong points:

- 15 mm thick plate with 100 mm high edge and 3 mm thick welded top, thus preventing accumulation and infiltration of grease between the top and the edge. Made of thickened steel with antioxidant treatment.
- Ribbed grid with blued finish.
- Sturdy adjustable feet
- High-quality chrome-plated bakelite knobs with maximum / minimum signals.

- Large, easy-to-remove front grease pan made entirely of stainless steel.
- Piezo ignition (1 per gas valve)
- Rear gas outlet facilitates installation in places where space is at a premium.
- Tubular burners with high calorific value and safety thermocouple.
- Burner with flame outlet around the entire perimeter that ensures even heat distribution over the entire hotplate. No "cold zone". High calorific value with safety thermocouple

Dimensions

Dimensioni esterne	1005x590x308 mm
Dimensioni superficie di cottura	670x500 mm

Technical data

Alimentazione	Gas
Peso	69 kg
Potenza Gas	12.8 kW
Potenza grill	7.2 kW

Standard equipment

In dotazione	Pietra vulcanica
--------------	------------------