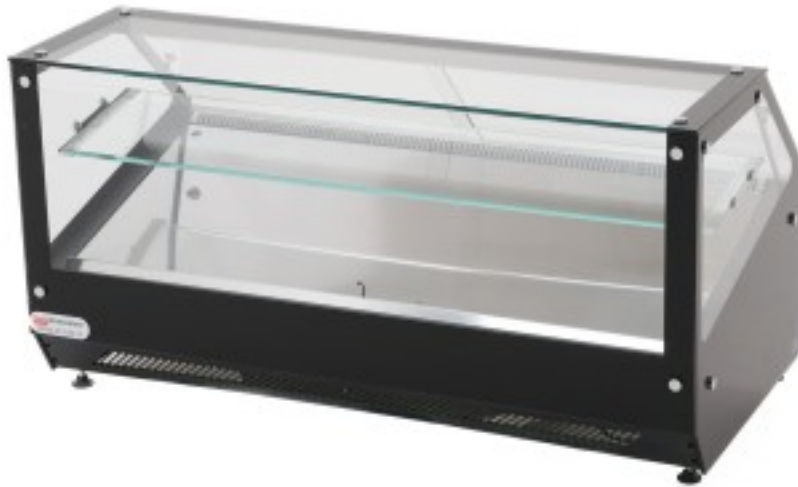


Cod: 101552145002

120x60x60h cm refrigerated double-decker counter display case black with straight glass panes built-in motor and smooth top



Description

Gorgeous counter-top refrigerated display case in modern design. Large glass panes and LED lighting ensure maximum product visibility. Equipped with a slightly inclined display surface and intermediate shelf, it allows the display of a variety of products. It was created to meet the needs of pastry shops, supermarkets, snack bars, sushi bars, and all those activities that need to serve their customers cold gastronomy products such as sandwiches, ready-made salads, fruit salads, cold dishes in self-service establishments, pastry cakes, sushi and much more.

Strengths:

- Modern design
- Led lighting
- Display surface with slight inclination
- Removable intermediate shelf
- Well-made materials, tempered glass and polished stainless steel
- Built-in motor

- Transparent plexiglass rear closures
- Transparent glass roof
- Digital temperature control
- Separate light and compressor on
- Height-adjustable support feet
- Entirely designed and manufactured in Europe

Dimensions

Dimensione tetto	1160x360 mm
Dimensioni esterne	1200x600x600 mm
Dimensioni ripiano	1160x250 mm
Piano espositivo	1100x440 mm

Technical data

Alimentazione	Electric
Capacità	160 Lt
Gas refrigerante	R449
Peso	110 kg
Potenza Elettrica	0.43 kW
Refrigerazione	ventilated
Temperatura d'esercizio	+4 +8 °C
Voltaggio	230 V