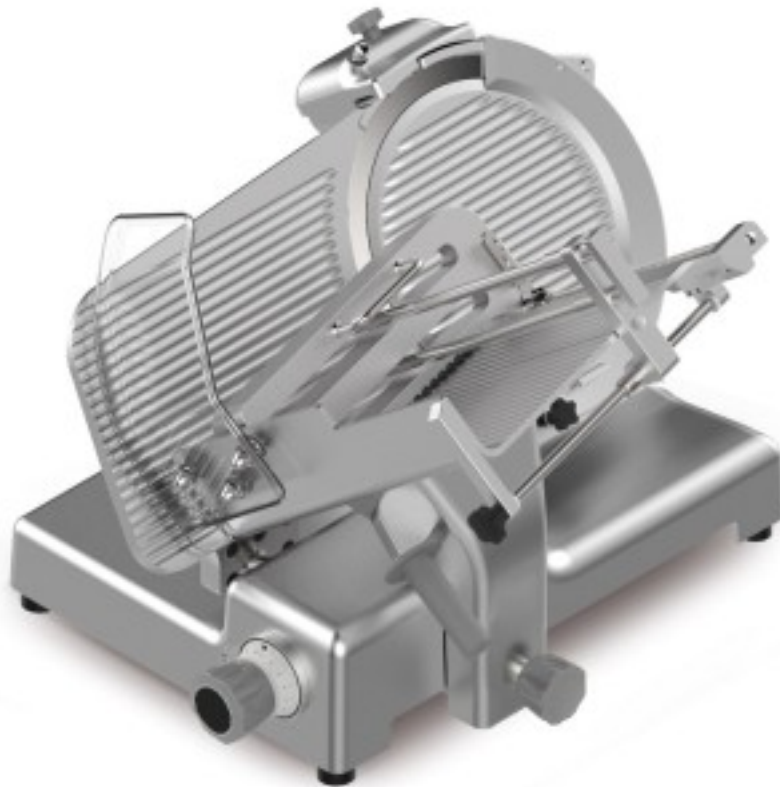


Cod: 10144016001

Automatic stainless steel gravity cold meat slicer with removable sharpener blade Ø 370 mm 780 W



Description

Professional automatic gravity slicing machine for cold cuts, blade 370 mm. The product features rounded lines with no visible edges or screws, ground chrome-plated sliding pin, self-lubricating sliding bushings, vulcanised rubber bumper on carriage, removable sail support cover, stainless steel blade guard and blade pulley without central hole to facilitate cleaning. The slicer has a progressive sail movement of the first 3 mm of opening that guarantees greater precision in cutting thin slices, a sealing ring on the sail shaft that prevents liquids from leaking into the machine. Practical disassembly of the blade cover. All small parts are made of stainless steel. Lower cover. Sharpener with lower protection tray. Blade extractor fitted as standard. Blade tilt 38°. Plastic knobs. Rubber feet. Neptune plate as standard. Ergonomic control panel with IP67 buttons. The product also has 3 speed settings, 3 carriage stroke settings, slice counting carried out, setting of slices to be cut with automatic machine stop, fully sealed drive motor, motion transmission with toothed belt and a slice per minute output of 24 - 46.

Dimensions

Corsa carrello	365 mm
Diametro lama	370 mm
Dimensioni esterne	820x650x730 mm
Dimensioni imballo	870x840x750 mm
Dimensioni piano d'appoggio	430x320 mm

Technical data

Alimentazione	Electric
Peso	63 kg
Peso lordo	79 kg
Potenza Elettrica	0.78 kW
Voltaggio	230 V