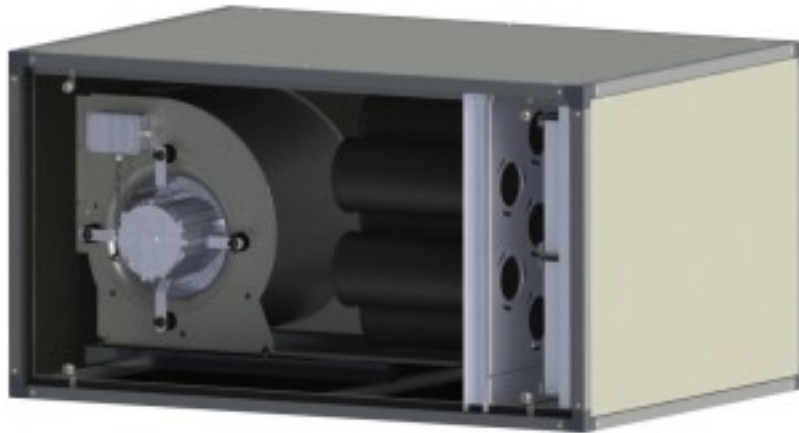


Cod: 9358004004030

**Extraction and filtration unit with fan with directly coupled motor capacity 2000 m<sup>3</sup>/h single-phase 0.30 kW**



## Description

Air extraction and activated carbon filtration unit with low-noise centrifugal fan with single-phase directly coupled motor. The supporting structure is made of extruded aluminium profiles, closed by galvanised sheet metal panels, coated on the inside with sound-absorbing sponge, 5 mm thick, fire retardant cl.1 E. The units are the ideal solution when air extraction and release to the outside is required after it has been filtered and deodorised; they are typically destined for canteens, restaurants, fast-food outlets, as well as hospitals or small painting plants. The units are normally supplied with a pleated textile pre-filter mounted on a filter holder frame for easy maintenance and a probe and pressure switch for monitoring filter cleanliness. The deodorising function is with extruded activated carbon cartridges in cylinders, our model CG54.

## Dimensions

Dimensioni esterne	1200x670x520 mm
--------------------	-----------------

### Technical data

Alimentazione	Electric
Frequenza	50 Hz
Peso	85 kg
Portata aspirazione oraria	2000 m <sup>3</sup> /h
Potenza Elettrica	0.30 kW
Voltaggio	230 V