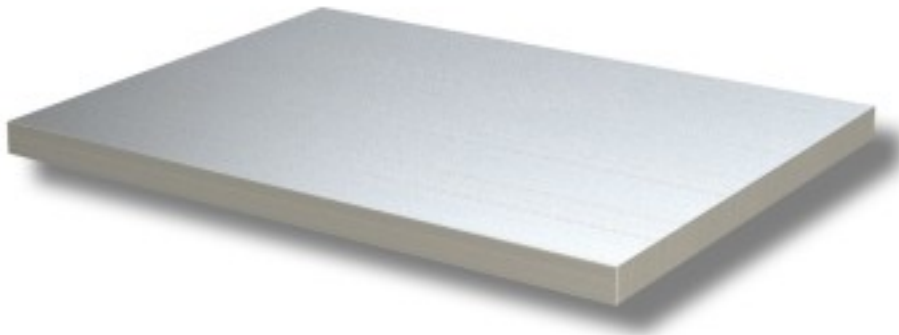


Cod: 74601429

Additional work table shelf depth 700 mm 1600x700x40h mm



Description

Work table shelf 160x70x4 h. Work table shelf for stainless steel tables brand Ristoattrezzature.com. The shelf cannot be used in other tables. The shelf has no corners to allow mounting in tables. Image purely indicative.

Dimensions

Dimensioni esterne	1600x700x40 mm
--------------------	----------------