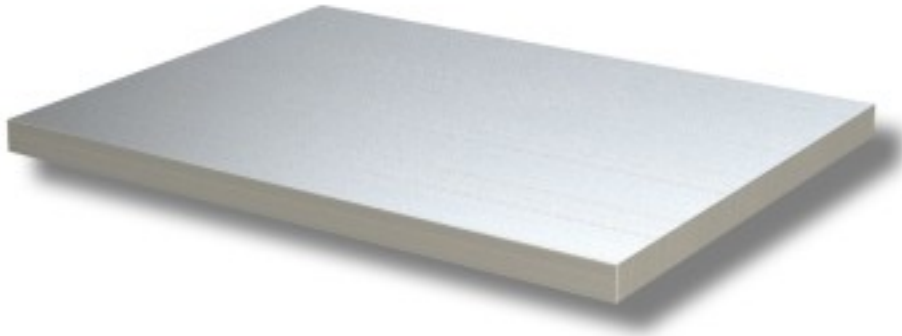


Cod: 74601422

**Additional work table shelf depth 700 mm 900x700x40h mm**



## Description

Work table shelf 90x70x4 h. Work table shelf for stainless steel tables brand Ristoattrezzature.com. The shelf cannot be used in other tables. The shelf has no corners to allow mounting in tables. Image purely indicative.

## Dimensions

Dimensioni esterne	900x700x40 mm
--------------------	---------------