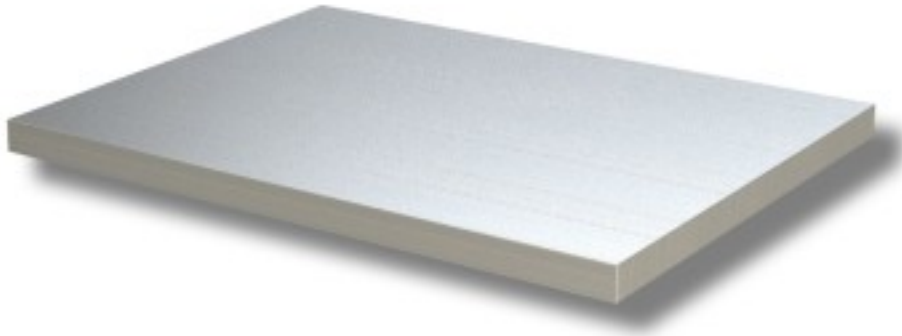


Cod: 74590480

Additional work table shelf 600 mm deep 1800x600x40h mm



Description

Work table shelf 180x60x4 h. Work table shelf for stainless steel tables brand Ristoattrezzature.com. The shelf cannot be used in other tables. The shelf has no corners to allow mounting in tables. Image purely indicative.

Dimensions

Dimensioni esterne	1800x600x40 mm
--------------------	----------------