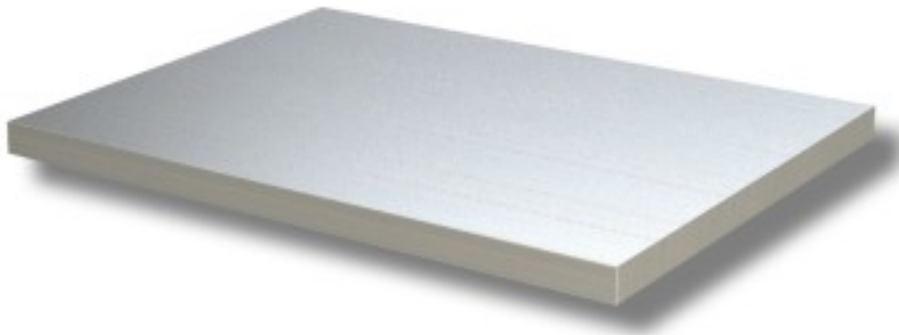


Cod: 74590475

Additional work table shelf depth 600 mm 1300x600x40h mm



Description

Work table shelf 130x60x4 h. Work table shelf for stainless steel tables brand Ristoattrezzature.com. The shelf cannot be used in other tables. The shelf has no corners to allow mounting in tables. Image purely indicative.

Dimensions

Dimensioni esterne	1300x600x40 mm
--------------------	----------------